



## CASE HISTORY:

## SECONDARY CONTAINMENT REHABILITATION

**PRODUCTS** BIO-SEAL 199, BIO-GARD 255

**LOCATION** HOUSTON, TX

**YEAR** 2025

### CHALLENGE

A small chemical manufacturing plant had worn and unprotected concrete that was being degraded by chemical exposure and equipment impact. Limited down time and application restrictions were key concerns of plant personnel.

### SOLUTION

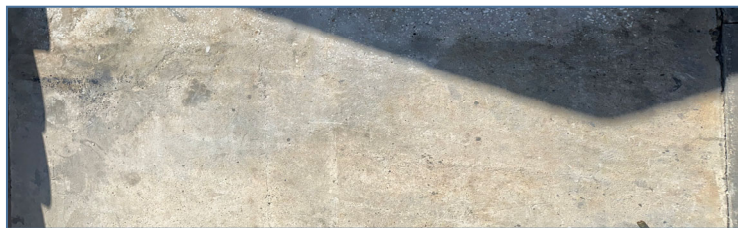
TFT's high chemical resistant BIO-SEAL 199 saturating resin and BIO-GARD 255 rollable coating were used to create a non-skid, chemically resistant surface.

### IMPLEMENTATION

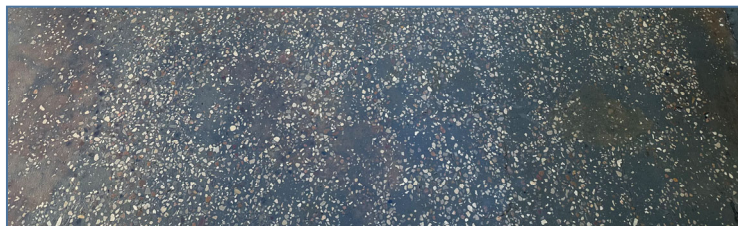
The concrete was washed with fresh water and detergent to remove chemical contaminants. After drying, a diamond grinder was used to remove the top layer of concrete exposing the pores of the concrete. This enables the Bio-Seal 199 to penetrate and saturate into the concrete.

After allowing the Bio-Seal 199 to start curing, the first coat of Bio-Gard 255 in Blue Grey was mixed and applied. Application was easily completed by standard nap roller. The first coat was allowed to cure until gummy, ~8 hours at 80F ambient temperatures before applying the second coat. Application of Bio-Gard 255 in Haze Grey was completed by roller.

Immediately after application while top coat was still wet, medium grit blasting sand was tossed onto the coating creating a uniform distribution of grit. This is done to add a non-skid texture to the coating otherwise high humidity or standing moisture will create a very slippery surface. The grit was "back rolled" with the used roller, encapsulating the grit into the coating to prevent loss over time.



Unprepared concrete



Prepped and primer concrete with Bio-Seal 199



Coated concrete with (2) coats of Bio-Gard 255 and non-skid

### OUTCOME

The containment area was transformed from a stained, chipped concrete slab into a chemically protected and attractive surface. Non-skid grit prevents future slip concerns and the Kevlar modified Bio-Gard 255 protects against impact from drums and other maintenance equipment.

